



Color Variants

BS475112

Included accessories

- 1 x outlet hose 3m.
- 1 x grid.
- 1 x pluggable meat probe.
- 1 x water inlet hose 3m.
- 1 x STS tray.
- punched.
- 40 mm deep.
- 1 x STS tray.

Optional accessories

- BA010301
- BA020360
- BA020370
- BA020380
- BA020390
- CLS10040
- Cleaning cartridges, set of 4
- CLS30040
- GN010330
- GN114130
- Stainless steel cooking insert
- GN114230
- Stainless steel cooking insert
- GN124130
- Stainless steel cooking insert
- GN124230
- Stainless steel cooking insert
- GN340230
- Non-stick aluminum cast-iron roaster

Installation Accessories

- GF111100
- GF121110
- GZ010011
- Extension for inlet and outlet (78" long)

Product Variants

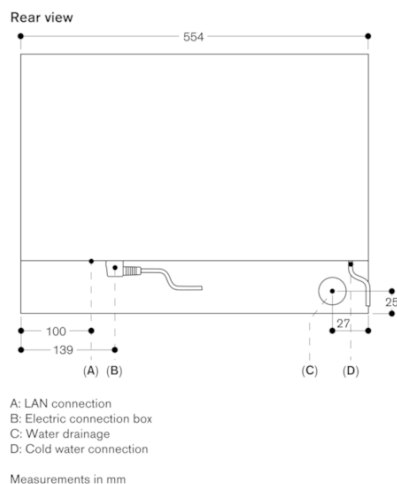
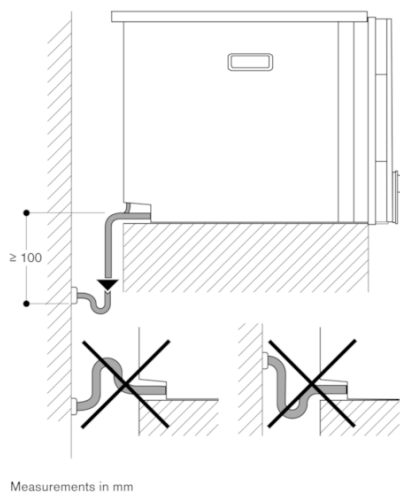
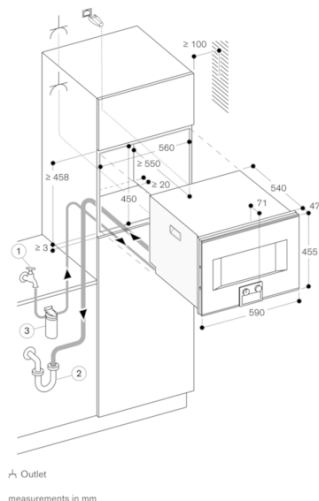
- BS470112
- BS471112
- BS474112

Product Features

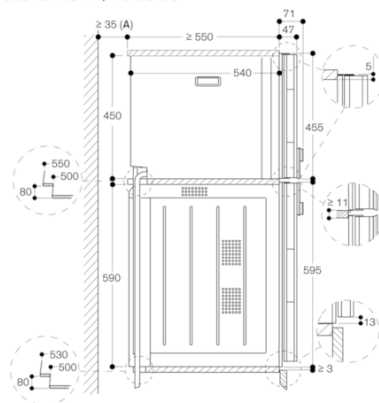
- Product color
- Construction type
- Built-in
- Door opening
- Lateral
- Required cutout size (HxWxD) (mm)
- 450-450 x 560-560 x 550
- Overall appliance dimensions (HxWxD) (mm)
- 455 x 590 x 540
- Product packaging dimensions (HxWxD) (mm)
- 590 x 660 x 690
- Control Panel Material
- Door Material - primary cavity
- Stainless steel behind glass
- Net weight (kg)
- 47.573
- Approval certificates
- CE, VDE
- Power cord length (cm)
- 175
- Cooking mode
- Broil and steam, Defrost, fermentation, Hot Air, Hot air + steam 100%, Hot air + steam 30%, Hot air + steam 60%, Hot air + steam 80%, Hot air broiling, Regeneration, Sous-vide cooking
- Time-setting Options

Consumption and connection features

- Watts (W)
  - Current (A)
  - 16
  - Volts (V)
  - 220-240
  - Frequency (Hz)
  - 50
  - Plug type
  - Gardy plug w/ earthing
  - Connecting cable type
  - Approval certificates
  - CE, VDE
  - UPC code
  - 825225963035
  - Product color
  - Alternative colors available
  - Energy source
  - Electric
  - Current (A)
  - 16
  - Volts (V)
  - 220-240
  - Frequency (Hz)
  - 50
  - Approval certificates
  - CE, VDE
  - Power Cord Length
  - Plug type
  - Gardy plug w/ earthing
  - Overall appliance dimensions (HxWxD) (in)
  - Required cutout size (HxWxD) (in)
  - Product packaging dimensions (HxWxD) (in)
  - Net weight (lbs)
  - 105.000
  - Gross weight (lbs)
  - 110
- 2020-03-25
- Page 1



Side view BS 474/475 over BO



A: Only necessary if the BS water hoses cannot be guided into the corner recesses of the device.

Measurements in mm