



BASIC CLASSIC COOKTOP EXTRACTOR CKA2



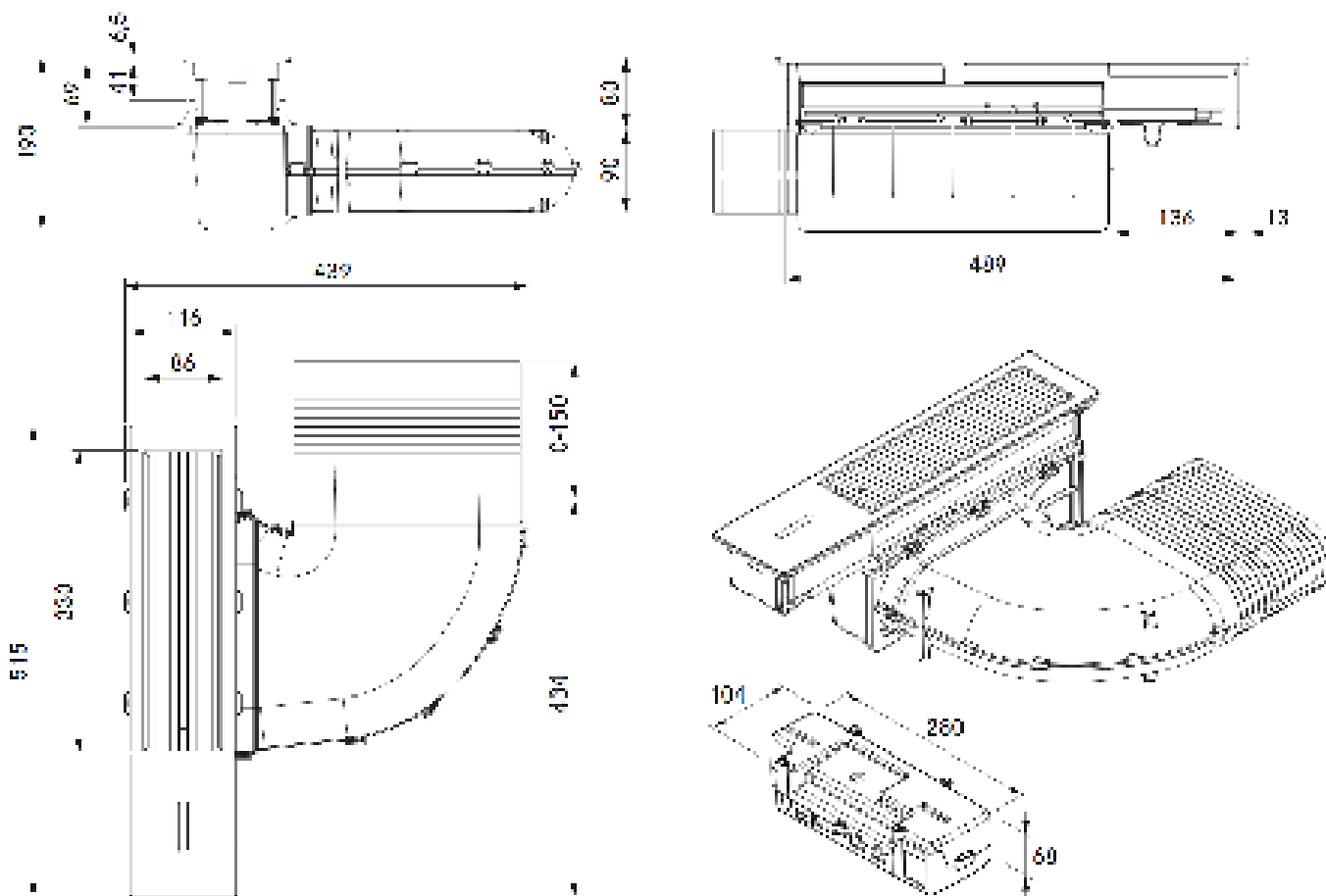
- Minimalistic design
- Intuitive sControl+ control
- Direct function selection
- Minimum volume
- Simple cleaning
- Cleaning lock
- Integrated grease drip pan
- Genuine stainless steel grease filter
- Compact size
- Automatic extractor control

SPECIFICATIONS

- Power levels: 1-5, P
- Connection on the exhaust side: BORA Ecotube
- Supply voltage: 220 - 240 V
- Frequency: 50/60 Hz
- Maximum power consumption max.: 550 W
- Fuse protection (internal): TR 3.15 A
- Power supply cable: 1m (F,G,J,I)
- Dimensions: (W x D x H): 439 x 515 x 190 mm
- Surface material: Glass SSG/ Stainless Steel 1.4301

Scope of delivery:

- BORA Classic cooktop extractor CKA2
- BORA Classic air inlet nozzle
- BORA Classic grease filter unit incl. grease filter tray
- BORA Classic control unit
- Height adjustment plate set
- Communication cable CAT 5 (3 m)
- Country-specific power supply cable (1 m)
- Installation instruction Classic 2.0
- Instruction manual Classic 2.0



PRODUCT & PLANNING INSTRUCTIONS:

- The cooktop extractor CKA2 is the central component and it contains the complete electronic controls for the overall BORA Classic 2.0 system. Operating the system or the individual components is not possible without the cooktop extractor.
- The BORA Classic 2.0 system is controlled using the operating panel of the cooktop extractor CKA2.
- Can be combined with all BORA Classic 2.0 cooktops
- The worktop height and depth can be exibly adjusted
- Installation type: flush or surface-mounted
- Possible exhaust ducting to the right and to the left
- Fans can be positioned in the plinth area as a result of the low installation height (100 mm) (only when using the ULS plinth fan)
- The Classic 2.0 control unit as a central connection point can be simply and compactly positioned in the plinth area
- Connection between touch control and the Classic 2.0 control unit via a CAT5 communication cable
- The drawers and/or shelves in the floor unit must be removable formaintenance and cleaning purposes
- The BORA Ecotube duct system is optimally tailored to the BORA cooktop extractors and guarantees 100% functionality and optimum performance The Classic 2.0 cooktop extractor system can be combined with all BORA sockets