

DOWNDRAFT VENTILATION SYSTEMS

ICBDD30 | ICBDD36 | ICBDD45

Constructed of heavy duty stainless steel, the Wolf down-draft rises from the countertop to whisk away odor and smoke into stainless steel, mesh filters and can be lowered beneath the countertop when not in use. Downdrafts integrate perfectly with transitional induction cooktops, gas cooktops and some modules, they can also be installed with certain sealed burner rangetops.

SPECIFICATIONS

Remote Control

- Control module with LED indicators can be mounted up to 2.7 metres away, either wall or countertop mounted.

Efficient Convenience

- Delay-off feature automatically turns unit off, chimney remains up to capture any remaining smoke and odours once you've finished cooking.

Easy To Clean

- Dishwasher-safe stainless steel, mesh filters are easy to remove and replace, with no messy filter papers to change. An indicator lights to tell you when the filters need cleaning.

Power

- Three-speed blower control with "boost" feature, whisks away smoke and odours, with a choice of internal or external motors up to 2028 CMH.

Dimensions and Specifications:

- H 356 x W 762/ 914/ 1143 x D 51 (mm)
- Transport Weight: 34/ 36 /39(kg)
- Voltage: 220-240 (V)
- Electrical Load: 3 / 10(Amp)
- Electrical Connection: 10 (Amp)
- Round Duct Size Diameter: 152 int./254 ext. (mm)
- Discharge: Up, down, left, right
- Max Duct Length Int Motor: 3 (m)
- Max Duct Length Ext Motor:8 (m)



DOWNDRAFT VENTILATION SYSTEMS

ICBDD30 | ICBDD36 | ICBDD45

PLANNING INFORMATION

- Wolf downdrafts can be installed with most Wolf cook-tops, but are not compatible with contemporary induction cooktops and the grill, steamer and fryer modules. Downdrafts can be installed with sealed burner rangetop model ICBSRT304. An accessory trim kit is necessary for this installation. Contact an authorized Wolf dealer for details.
- The remote-mounted control module must be located within 2.7 m of the downdraft assembly and a minimum 76 mm from the edge of the cooktop cutout.
- Internal and remote blowers are available through an authorized Wolf dealer.
- Internal blowers include a 152 mm round discharge and can be front or rear mounted. It can be discharged in any direction by rotating the blower box. Remote blowers include a 254 mm discharge and can be discharged from the front or rear.
- Consult a qualified HVAC professional for specific installation and ducting applications.

ELECTRICAL

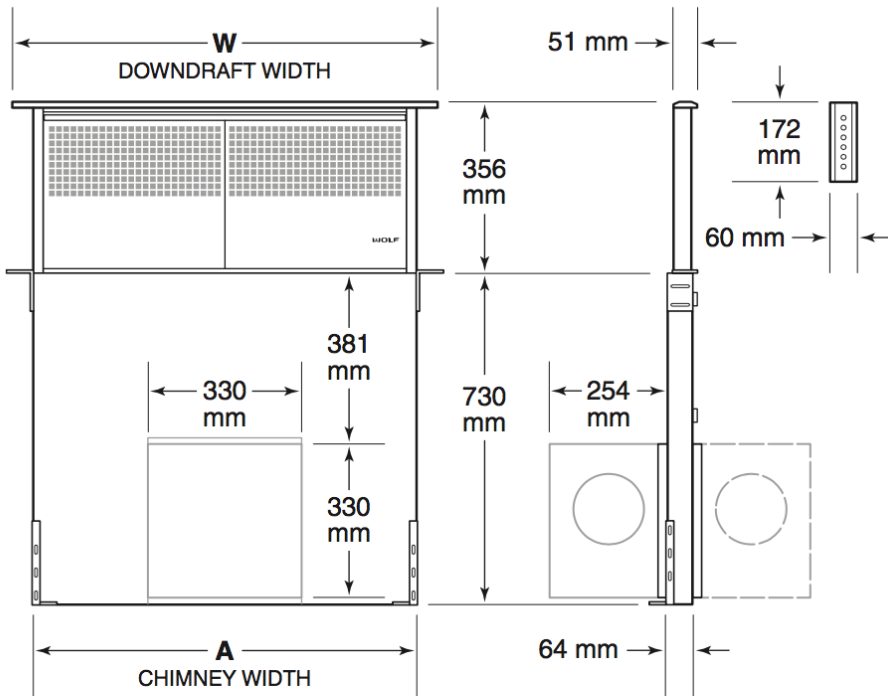
- Installation must comply with all applicable electrical codes and be properly grounded (earthed).
- Locate the electrical supply as shown in the illustrations on the following pages. A separate circuit, servicing only this appliance is required. A ground fault circuit interrupter (GFCI) is not recommended and may cause interruption of operation.
- Certain installations may require that the electrical supply be placed in an adjacent cabinet.

ELECTRICAL REQUIREMENTS

Electrical Supply	220-240V AC, 50Hz 220V AC, 60Hz
Service	415W
Receptacle	grounding-type (earthed)



DOWNDRAFT VENTILATION SYSTEMS
ICBDD30 | ICBDD36 | ICBDD45



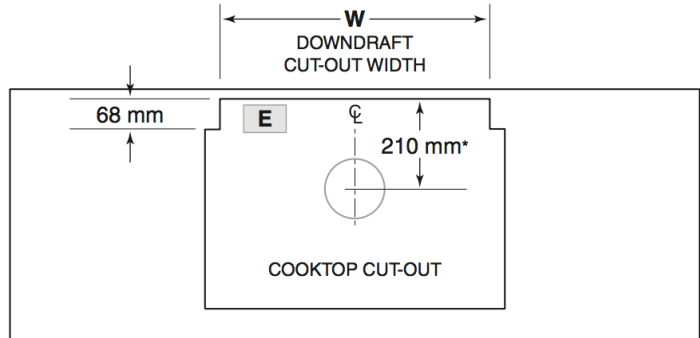
NOTE: Shown with front mounted internal blower with 152 mm round discharge, dashed line represents rear mount.

WIDTH	W	A
ICBDD30	762 mm	673 mm
ICBDD36	914 mm	826 mm
ICBDD45	1143 mm	978 mm

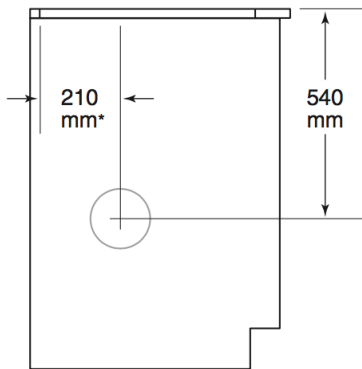


DOWNDRAFT VENTILATION SYSTEMS INSTALLATION WITH COOKTOP

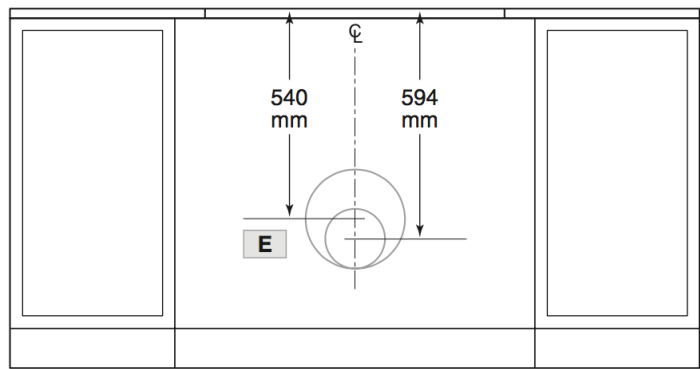
ICBDD30 | ICBDD36 | ICBDD45



TOP VIEW



SIDE VIEW



FRONT VIEW

*152 mm back from countertop cut-out when internal blower is rear mounted.

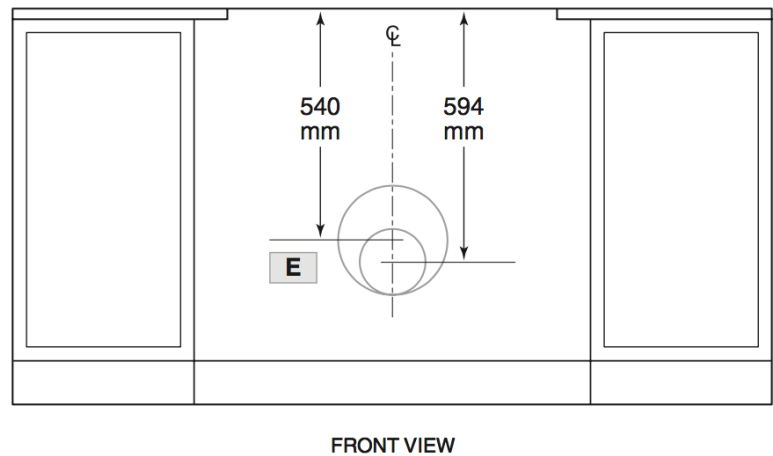
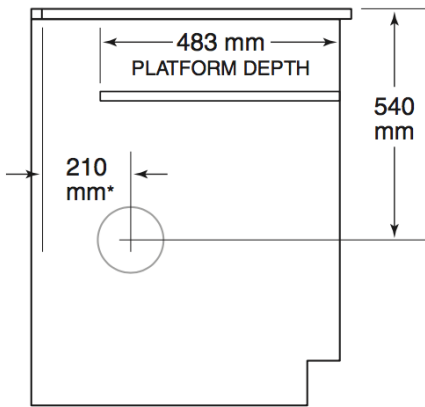
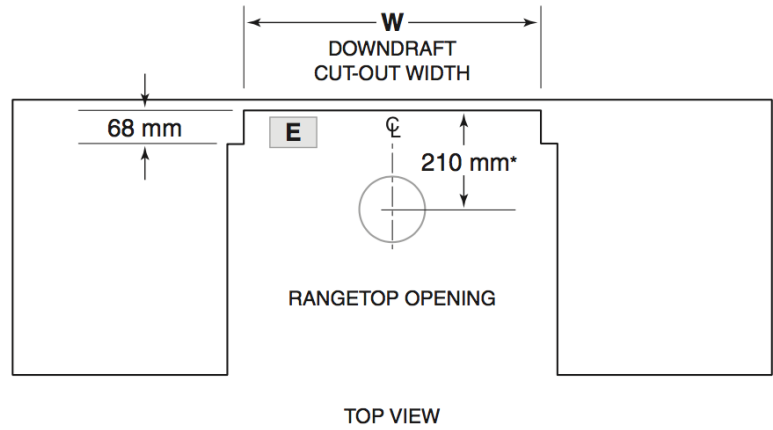
NOTE: Internal blower 152 mm round, side, rear or bottom discharge. Remote blower 254 mm round, rear discharge. Centerline indicates center of downdraft cut-out.

CUTOUT WIDTH	W
ICBDD30	699 mm
ICBDD36	851 mm
ICBDD45	1003 mm



**DOWNDRAFT VENTILATION SYSTEMS
INSTALLATION WITH SEALED BURNER RANGETOP**

ICBDD30 | ICBDD36 | ICBDD45



*152 mm back from countertop cut-out when internal blower is rear mounted.

NOTE: Internal blower 152 mm round, side, rear or bottom discharge. Remote blower 254 mm round, rear discharge. Centerline indicates center of downdraft cut-out.

CUTOUT WIDTH	W
ICBDD30	699 mm
ICBDD36	851 mm