



BO471112
Oven 400 series
Stainless steel-backed full glass door
Width 60 cm
left-hinged
Controls at the top



Pyrolytic system
 17 heating methods, with core temperature probe, rotisserie spit and baking stone function
 Automatic programmes
 Core temperature probe with estimation of cooking time
 TFT touch display
 Electronic temperature control from 30 °C to 300 °C
 Net volume 76 litres

Heating methods

Hot air.
 Eco hot air. Top + bottom heat. Top + 1/3 bottom heat. Top heat. 1/3 top + bottom heat. Bottom heat. Hot air + bottom heat. Hot air + 1/3 bottom heat. Full surface grill + circulated air. Full surface grill. Compact grill. Baking stone function. Roaster function. Dough proofing. Defrosting. Keeping warm.

Capacity

Automatic door opening.
 Rotary knob and TFT touch display operation.
 Clear text display.
 Option to save individual recipes (incl. core temperature probe).
 Personalisation of automatic programmes.
 Information key with use indicators.
 Side-opening door opens up to 180° angle.

Features

Three-point core temperature probe with automatic shut-off and estimation of cooking time.
 Automatic programmes.
 Rotisserie spit.
 Baking stone socket.
 Actual temperature display.
 Rapid heating.
 60 W halogen light on the top.
 2 x 10 W halogen light on the side.
 Enamelled side shelf supports with 4 tray levels, pyrolysis-safe.
 Home network integration for digital services (Home Connect) either via cable connection LAN or wireless via WiFi.
 The use of the Home Connect functionality depends on the Home Connect services, which are not available in every country. For further information please check: home-connect.com.

Safety

Thermally insulated door with quadruple glazing.
 Child lock.
 Safety shut-off.
 Cooled housing with temperature protection.

Cleaning

Pyrolytic system.
 Gaggenau enamel.
 Heated catalyser to clean the oven air.

Performance

Door hinge not reversible.
 The façade of the appliance extends 47 mm from the furniture cavity.
 Consider the overhang when planning to open drawers next to the appliance.
 When planning a corner solution, pay attention to the 90° door opening angle.

Characteristics

Color / Material Front
 Built-in / Free-standing
 Built-in
Integrated Cleaning system
 Pyrolytic
Required niche size for installation (HxWxD)
 590-590 x 560-560 x 550
Dimensions
 595 x 590 x 547
Dimensions of the packed product (HxWxD)
 760 x 700 x 650
Control Panel Material
 without panel
Door Material
 Stainless steel behind glass
Net weight
 61.9
Usable volume of cavity
 76
Cooking method
 Baking stone function, Bottom heat, Defrost, Dough proving, Full width grill, Half width grill, Hot Air, Hot Air-Eco, Hot-air grilling, Roaster function, Top/Bottom heating, Top heat, warming
First cavity material
 Oven control
 electronic
Number of interior lights
 3
Approval certificates
 Australia Standards, CCC, CE, China, China ROHS 20, Eurasian, G-Mark, Ukraine, VDE
Length electrical supply cord
 EAN code
 4242006278519
Number of cavities (2010/30/EC)
 1
Energy efficiency rating
 A
Energy consumption per cycle conventional (2010/30/EC)
 1.25
Energy consumption gas oven per cycle conventional (2010/30/EC)
 0.83
Energy consumption per cycle forced air convection (2010/30/EC)
 0.83
Energy consumption gas oven per cycle forced air convection (2010/30/EC)
 95.4
Energy efficiency index (2010/30/EC)
 95.4
Connection Rating
 3700
Fuse protection
 16
Voltage
 220-240
Frequency
 50
Plug type
 fixed connection, no plug

Consumption and connection features

2022-06-16
 Page 1

To achieve the 550 mm installation depth, the connection cable needs to follow the slanted edge on the lower right hand corner of the housing.
 The mains socket needs to be planned outside the built-in niche.
 The LAN port can be found at the back on the upper right side.

Connection

Total connected load 3.7 KW.
 Plan a connection cable.
 Plan a LAN cable.
 Power consumption standby/display on 0.7 W.
 Power consumption standby/display off 0.5 W.
 Power consumption standby/network 1.4 W.
 Time auto-standby/display on 20 min.
 Time auto-standby/display off 20 min.
 Time auto-standby/network 20 min.
 Please check the user manual for how to switch off the WiFi module.

Color Variants

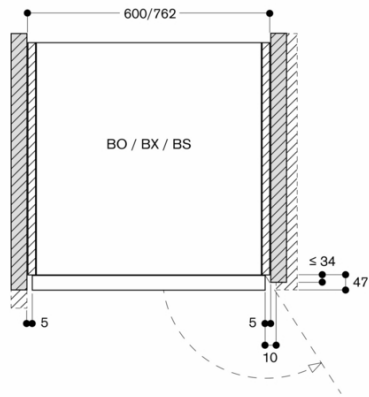
BO471112
Stainless steel-backed full glass door
Width 60 cm

Included accessories

2 x enamel baking tray.
 suit. pyrolytic clean.
 1 x rotary spit.
 1 x glass pan.
 1 x grill shelf.
 1 x grill tub with grid.
 1 x pluggable meat probe.

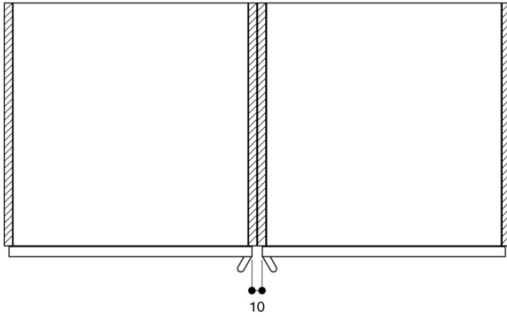
BO471112
 Oven 400 series
 Stainless steel-backed full glass door
 Width 60 cm
 left-hinged
 Controls at the top
 2022-06-16
 Page 2

Air inlet cross section at the door edges

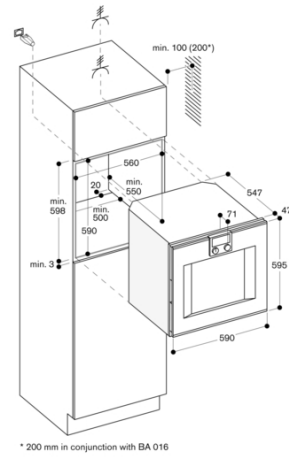
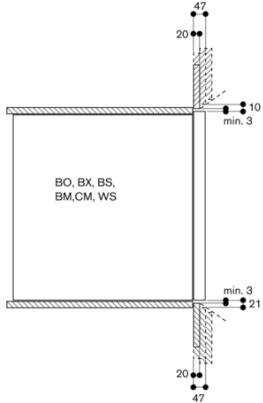


Measurements in mm

When installed next to each other



Cross section of the top/bottom door edge gaps



* 200 mm in conjunction with BA 016