



Color Variants
CV282111
Stainless steel frame
Width 80 cm

CV282111
Flex induction cooktop with integrated ventilation system 200 series
Stainless steel frame
Width 80 cm
Air extraction / Air recirculation



Sturdy stainless steel frame
 Flex function for combining the rectangular cooking areas
 Free positioning of cookware inside combined cooking areas
 Highly efficient ventilation system integrated in the cooktop
 Fully automatic ventilation system functions
 Large metal grease filters, easy to remove, dishwasher-safe
 Energy-saving, low-noise fan
 Air extraction or air recirculation system
 Integrated activated charcoal filter easily removeable from above for air recirculation system
 Twist-Pad control with removable magnetic knob
 Easy control of all functions with bicoloured display

Cooking zones
 2 flex induction cooking areas 19x23 cm (2200 W, with booster 3700 W), linked together 38x23 cm (3300 W, with booster 3700 W).

Performance of ventilation system
 Performance and noise output levels:
 Air output according to EN 61591.
 Sound power level according to EN 60704-3.
 Air extraction (min/max): 359 / 636m³/h.
 Noise air extraction (min/max): 61 / 74 dB(A).
 Air recirculation (min/max): 497 / 627m³/h.
 Noise recirculation (min/max): 67 / 72 dB(A).

Capacity
 Twist-Pad control with removable magnetic knob.
 User friendly control with bicoloured display (white / orange).
 Cooking zone and cooking area marking.
 Electronic power control in 17 cooking power levels.
 Control of ventilation system with 3 electronically controlled power levels and 1 intensive mode.

Features
 Flex function for rectangular cooking areas.
 Automatic pot detection when the cooktop is switched on.
 Professional cooking function.
 Booster function for pots.
 Booster function for pans.
 Keep warm function.
 Automatic sensor-controlled performance adjustment of the ventilation system.
 Automatic activation of the ventilation system when a cooking zone is used.
 Interval ventilation, 6 min.
 Sensor-controlled run-on function.
 Removable, dishwasher-safe grease filter unit.
 High-grade black zinc die-casted cover for ventilation system, dishwasher-safe.
 Fan technology with highly efficient, brushless DC motor (BLDC).
 Airflow-optimised interior for efficient air circulation.
 Stopwatch.
 Cooking timer for up to 99 minutes.
 Short-term timer.

Characteristics
Product name/family
 Cooking zone ceramic
Construction type
 Built-in
Energy input
 Electric
Total number of positions that can be used at the same time
Type of control setting devices
Min. required niche size for installation (HxWxD)
 223 x 780-780 x 490-490
Width of the appliance
 804
Dimensions
 223 x 804 x 520
Dimensions of the packed product (HxWxD)
 430 x 950 x 660
Net weight
 28.7
Gross weight
 33.5
Residual heat indicator
 Separate
Location of control panel
 Hob front
Type of external control possibility
Basic surface material
 Ceramic
Color of surface
 Black, Stainless steel
Color of frame
 Stainless steel
Length electrical supply cord
 150
Knob Material
 Full metal
Sealed Burners
 No
heating with booster
 All
Type of pan support
Power of heating element (kW)
Power of 2nd heating element (kW)
 3.3
Power of 3rd heating element (kW)
Power of 4th heating element (kW)
Power of 5th heating element (kW)
 3.7
Power of 3rd heating element (kW in boost)
Number of speed settings
Maximum output air extraction
 532
Boost position output recirculating
 627.0
Maximum output recirculating air
 497
Boost position air extraction
 636
Noise level
 70
Diameter of air outlet
Grease filter material
Odour filter
 No
Operating Mode
 Convertible
Delay Shut off modes
 30
Grease filter type
Clean filter reminders
Electrical connection rating
 7400
Fuse protection
Voltage
 220-240
Frequency
 50; 60
Universal Product Code
Main colour of product
 Black
Total number of positions that can be used at the same time
Length electrical supply cord
 150
Min. required niche size for installation (HxWxD)
 223 x 780-780 x 490-490

Memory function.
 Options menu.
 Power management.
 Home network integration for digital services (Home Connect) wireless via WiFi.
 The use of the Home Connect functionality depends on the Home Connect services, which are not available in every country. For further information please check: home-connect.com.

Safety
 Main switch.
 Operation indicator.
 Pot detection.
 digital 2-step
 Child lock.
 Safety shut-off.
 Detachable, dishwasher-safe two-stage overflow protection.
 Removable overflow container, 900ml capacity, dishwasher safe.

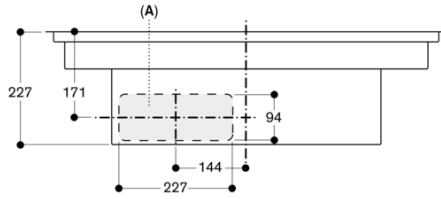
Performance
 Must be ordered & installed with one of the following Gaggenau kits:
 CA084010 installation kit for fully ducted extraction. CA082010 installation kit for air recirculation. CA082020 installation kit for partially ducted recirculation. All further necessary flat ducting elements (DN 150) must be ordered separately.
 The unducted recirculation set CA082010 requires a vertical aperture of min. 25 mm behind the backpanel of the furniture. Suggested for ideal performance are 50 mm.
 For recirculation installations planned at external walls that are not well insulated a ducted or partially ducted installation is suggested. Refer partially ducted recirculation kit CA082020 or alternatively a fully ducted extraction kit CA084010.
 (additional ducting components DN 150 are required for these installations)
 Bottom cabinet width: min. 60 cm.
 Worktop depth: min. 60 cm with unducted recirculation, min. 65 cm with ducted recirculation/extraction.
 Immersion depth 223 mm.
 The air outlet on the backside of the appliance can directly be accessed with a flat duct element (DN 150).
 In air extraction a one-way flap with a maximum opening pressure of 65 Pa should be installed.
 For optimum performance in air recirculation we recommend an outflow surface area of at least 440 cm².
 Operates with magnetic (induction) iron pots and pans only. For an optimal heat distribution, the use of sandwich bottom cookware is recommended.
 The pressuredrop resistant blower allows for ductings up to 8 m with 3 x 90° bows while keeping sufficient performance.
 Appliance must be fixed from underneath.
 Appliance weight: approx. 29. kg
 The appliance must be freely accessible from below.
 When installing a ventilation hood with air extraction mode and a chimney-vented fireplace, the power supply line of the ventilation appliance needs a suitable safety switch.
 The bearing capacity and stability, in the case of thin worktops in particular, must be supported using suitable substructures. Take into account the appliance weight and additional loads.

Connection
 Total connected load 7.4 KW.
 Connecting cable 1.5 m without plug.
 Power consumption standby/display off 0.5 W.
 Power consumption standby/network 2.0 W.

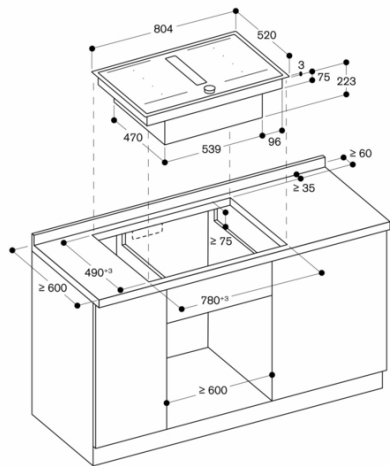


CV282111
 Flex induction cooktop with integrated
 ventilation system 200 series
 Stainless steel frame
 Width 80 cm
 Air extraction / Air recirculation
 2022-12-01
 Page 2

Front view

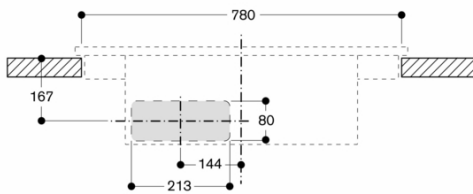


A: Connected directly at the rear
 measurements in mm



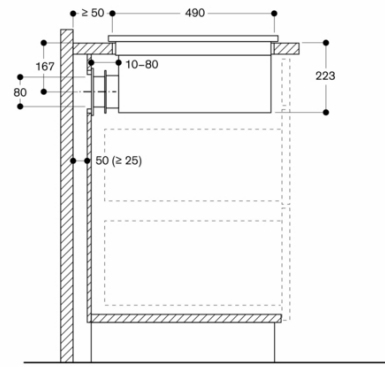
Measurements in mm

Front view - furniture cut-out for unducted recirculation;
 surface-mounted



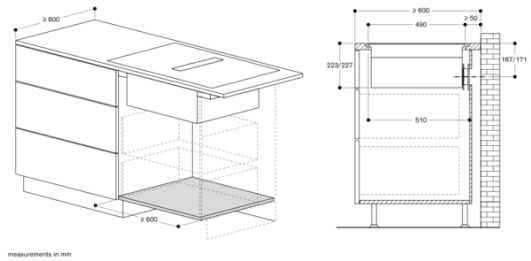
Measurements in mm

Side view with unducted recirculation; surface-mounted

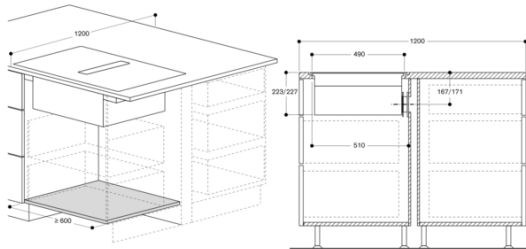


Not recommended for non-thermally insulated outer wall or floor ($U \geq 0.5 \text{ W/m}^2\text{K}$)

Measurements in mm

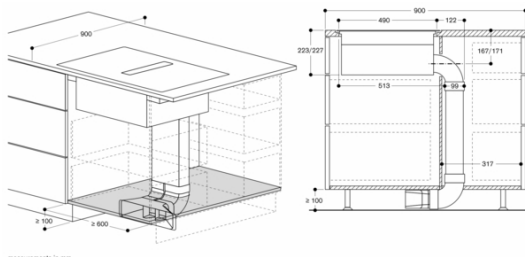


measurements in mm

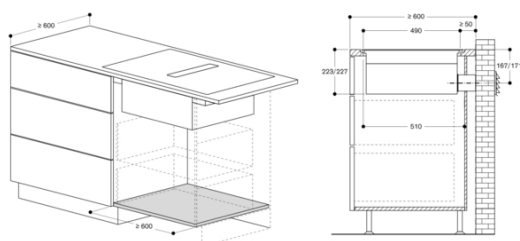


measurements in mm

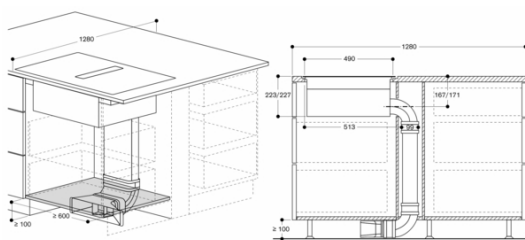
CV282111
 Flex induction cooktop with integrated
 ventilation system 200 series
 Stainless steel frame
 Width 80 cm
 Air extraction / Air recirculation
 2022-12-01
 Page 3



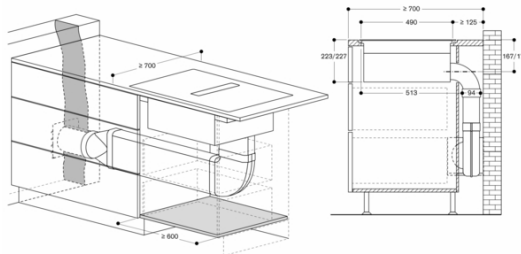
measurements in mm



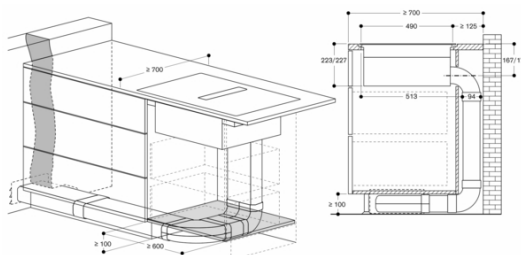
measurements in mm



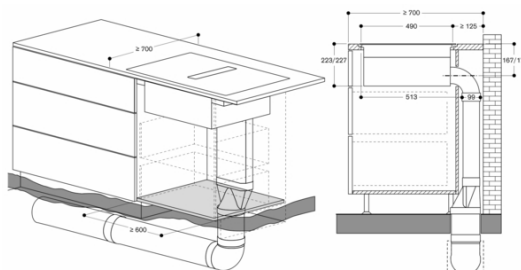
measurements in mm



measurements in mm

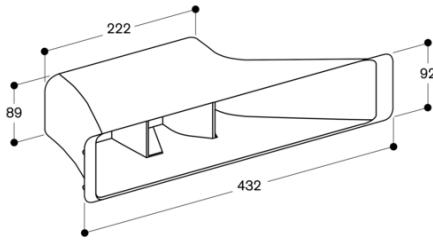


measurements in mm



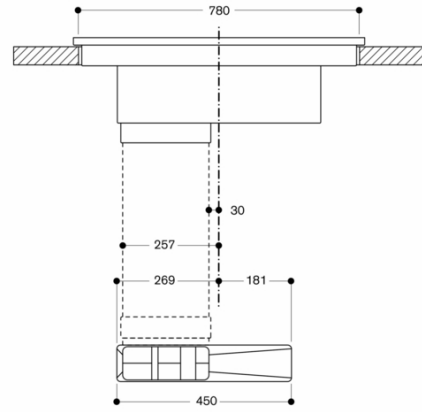
measurements in mm

CV282111
 Flex induction cooktop with integrated
 ventilation system 200 series
 Stainless steel frame
 Width 80 cm
 Air extraction / Air recirculation
 2022-12-01
 Page 4



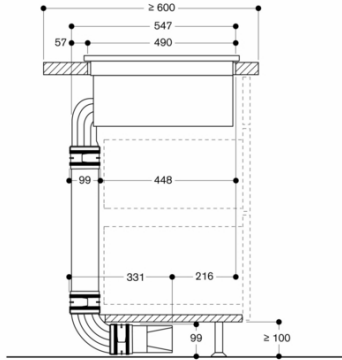
measurements in mm

Front view of CV 282 with ducted recirculation



Measurements in mm

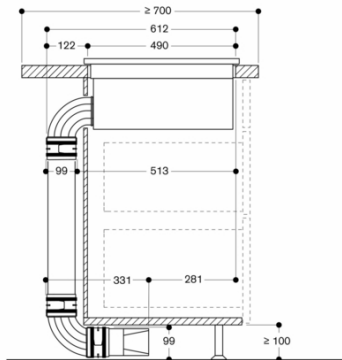
Side view with kit ducted air recirculation 600 mm worktop depth;
 surface-mounted



Not recommended for non-thermally insulated outer wall or floor ($U \geq 0.5 \text{ W/m}^2\text{K}$)

Measurements in mm

Side view with kit ducted air recirculation 700 mm worktop depth;
 surface-mounted



Not recommended for non-thermally insulated outer wall or floor ($U \geq 0.5 \text{ W/m}^2\text{K}$)

Measurements in mm